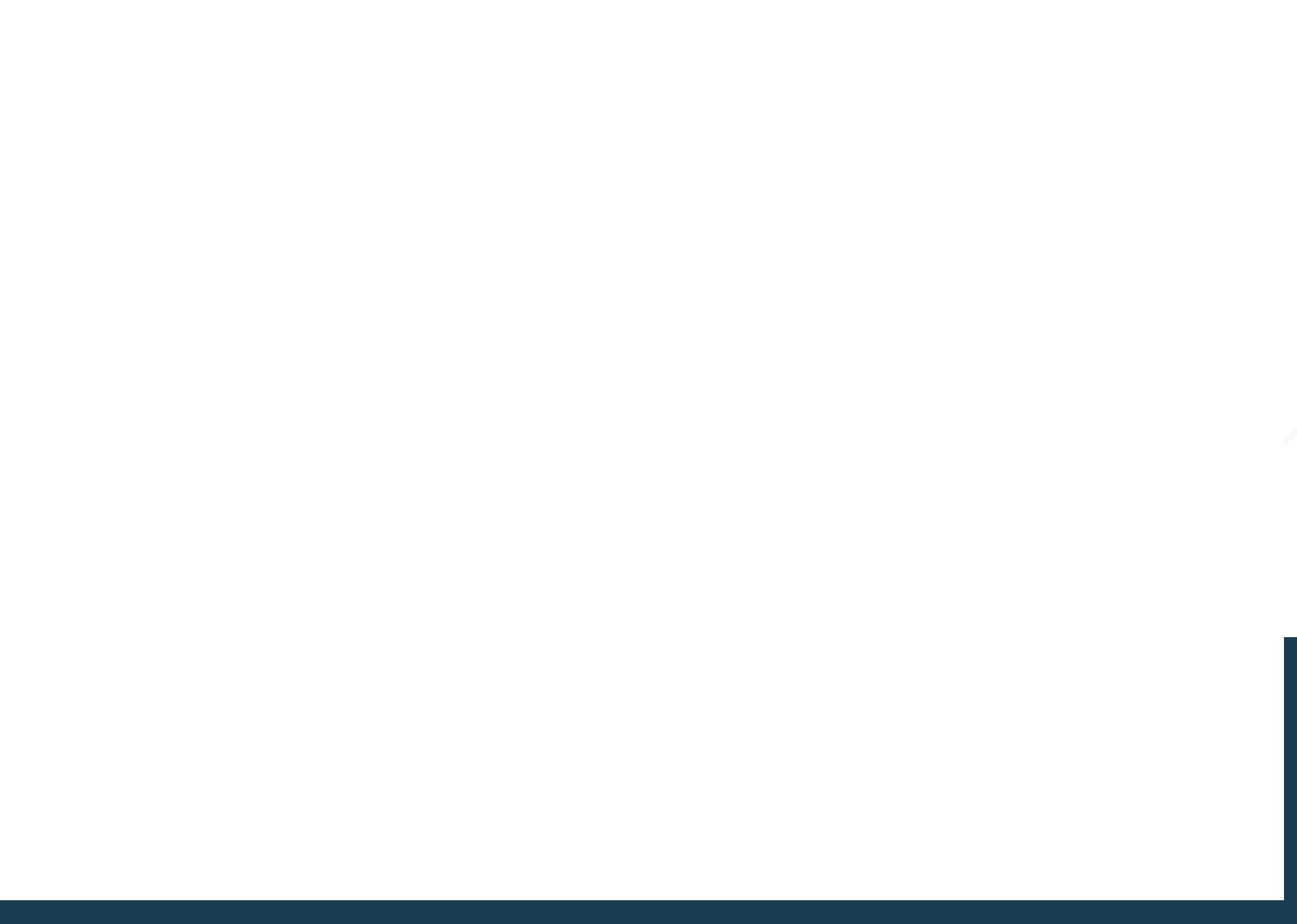


TIME  
FOR  
LIGHT!



ZENIT BLUE BOX LIGHT





# ZENIT BLUE BOX LIGHT!

## Zenit Blue Box LIGHT!

The controller of LPG&CNG autogas installation has been designed on the basis of our long-term experience in the industry. The Zenit Blue Box LIGHT version anticipates the expectations of the assembly workshops and drivers. This is a BASIC line product - price-optimal, and at the same time technically based on the PRO line.



THE **LIGHT VERSION** OF THE CONTROLLER REPRESENTS **POLISH TECHNOLOGICAL THOUGHT**



# BLUE BOX LIGHT

IT WAS CREATED THANKS TO EXPERIENCED TECHNICIANS FROM THE AG CENTRUM RESEARCH AND DEVELOPMENT CENTER. ZENIT BLUE BOX IN THE LIGHT VERSION IS A FULLY POLISH PRODUCT. **POLISH KNOW HOW. POLISH PRODUCTION. THE PRODUCT IS 100% POLISH.**

# MORE FUNCTIONS IN THE BASIC LINE!

Time for LIGHT! The range of cars on the market is very wide. From economic or budget versions, through the standard class to premium brands. We are aware of various needs of the drivers on the automotive market, therefore the Zenit brand is an installation available in 3 product lines: BASIC, PRO and PREMIUM. We turn to workshops and drivers with the new Zenit controller of the BASIC line. Blue Box model in the LIGHT version.

**THE LIGHT VERSION IS A COMBINATION OF KNOWLEDGE AND TECHNICAL CAPABILITIES OF THE ZENIT BRAND.** FROM NOW ON, THE BASIC LINE OFFERS MUCH MORE! ZENIT BLUE BOX **LIGHT** RESPONDS TO THE CONTEMPORARY NEEDS OF DRIVERS.

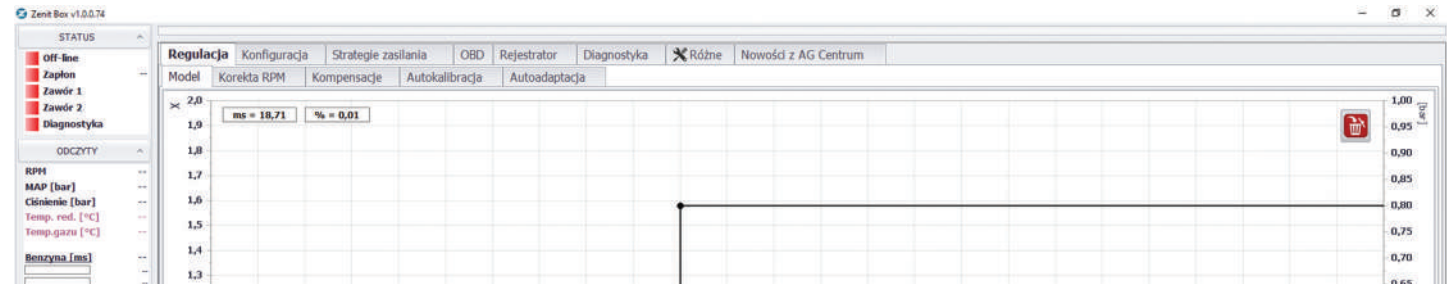
Creating the LIGHT version, we based on the functionalities of the Blue Box model, valued by installers. We chose those ones necessary for the basic setting of the gas installation and then closed them in a smaller housing, with a dedicated 24 vertical connector, to make the installation of the controller simple and pleasant.

# TIME FOR **LIGHT!**



## ZENIT BOX – ALSO FOR THE BASIC LINE!

# ZENIT BOX ALSO FOR THE BASIC LINE!



As an installer, you will appreciate that Blue Box LIGHT has a common interface with other 'Box' controllers. You operate one program instead of several different ones. Blue Box LIGHT guarantees the possibility to upload a map with all settings from one Box controller to another. For example from Blue Box OBD or Black Box to Blue Box in the LIGHT version. Then the functions that are available in the given controller will be activated.

## TECHNICAL ASSISTANCE

### TECHNICAL HELPLINE FOR WORKSHOPS



+48 800 703 039



+48 606 145 996



TECHNICZNY@AGCENTRUM.PL



MON - FRI 8:00 - 20:00 (CET), SAT 8:00 -14.00 (CET)



# VERSIONS OF BLUE BOX

## DRIVERS

## HOMOLOGATED QUALITY

The Zenit Blue Box LIGHT controller has homologations required by law, granted by research and certification units. Controller homologations in the LIGHT version are the same as in the standard and OBD versions. The choice of Zenit Blue Box LIGHT installation is a guarantee of stable operation and homologated quality.

E20 67R-01 1029

E20 110R-01 0053

E20 10R-04 3857



### LIGHT VERSION

**Zenit Blue Box in the LIGHT version**  
The compact housing, the bottom of the sticker in gray and the note „LIGHT” next to the information on the number of cylinders supported



### STANDARD VERSION

**Zenit Blue Box in the STANDARD version**  
The bottom of the sticker in grey color

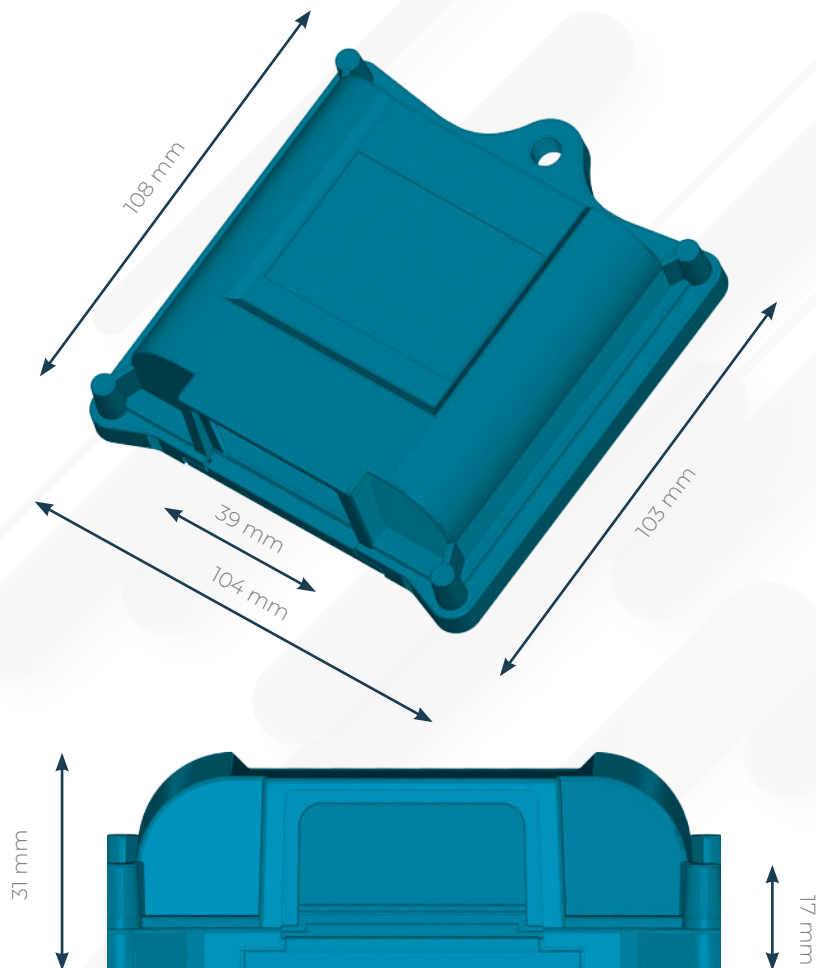


### OBD VERSION

**Zenit Blue Box in OBD version**  
The bottom part of the sticker in navy blue, and the note „OBD” next to the information on the number of cylinders supported

## CHECKED HOUSING

IN THE LIGHT VERSION, WE USED CHECKED COMPOSITE HOUSING. IT IS A COMBINATION OF POLYAMIDE WITH 30% OF GLASS FIBER. THANKS TO THIS, THE HOUSING IS CHARACTERIZED BY:



minimal thermal expansion

high durability

resistance to high temperatures

maximum of the operating temperature is up to +180°C

high surface hardness

high rigidity

dimensional stability.

## BASIC INFORMATION



injection type:

**indirect**

number of cylinders:

**3 | 4**

type of gas fuel:

**LPG&CNG**

BRAND: **ZENIT** | MODEL: **BLUE BOX** | VERSION: **LIGHT**

# HARDWARE



## CERTIFIED AUTOMOTIVE PROCESSOR

Freescale processor tested in the standard and OBD versions. Ideal for automotive applications. It is resistant to electromagnetic interference, which is important for the work of the installer, especially when assembling installations in several year old cars. Thanks to the special varnish on the disc, it is resistant to moisture.

## LIGHT VERSION



Supply voltage: from 9 V to 16 V

Current (supply): up to max. 10 A

Operating temperature: -20°C up to +120°C

**MOISTURE RESISTANT!**







## SWITCH

In the LIGHT version it is possible to use 2 types of Zenit switches. The switch used in the Blue Box model and the RGB switch used in the Black Box model (only part of the features dedicated to the Premium line will be available).

## ELECTRONICS COMPOSES OF:



- Zenit Blue Box LIGHT controller
- Checked and praised electric beam
- MAP sensor with gas temperature sensor
- Integrated modern switch
- Reducer temperature sensor
- Level indicator and gas reserve in the tank (optional)

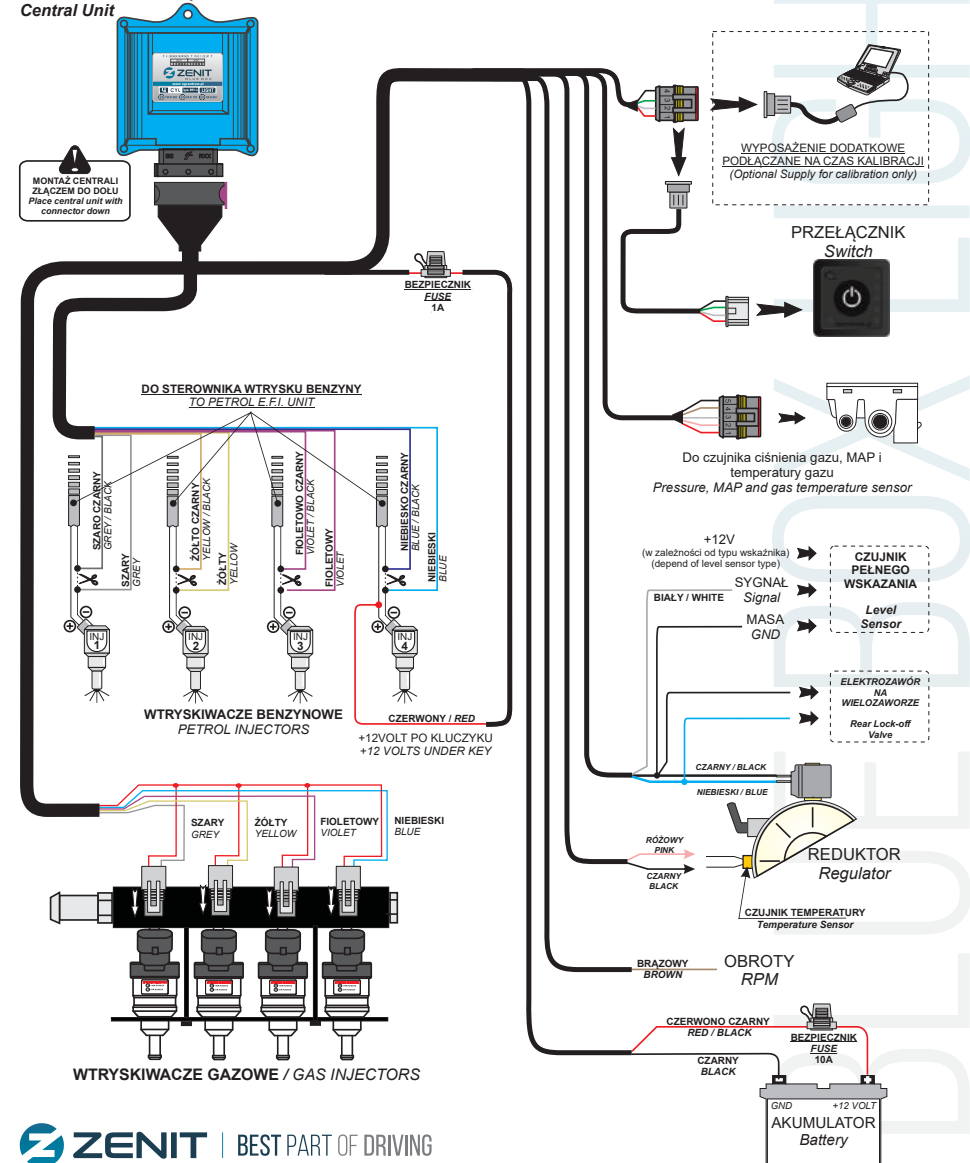
## 24-PIN ELECTRICAL CONNECTOR

The electrical connector in Zenit Blue Box LIGHT is different from the connector used in the standard version and the OBD version of the product. In the LIGHT version, we used a homologated 24-pin connector in compliance with all the necessary functions of the controller. In accordance with the idea of downsizing, we designed an ECU with the essential parameters for the operation of autogas installations - on a PCB disc with a small size.



### 4 cyl. Schemat Elektryczny Electric Wiring

CENTRALA STERUJĄCA  
Central Unit

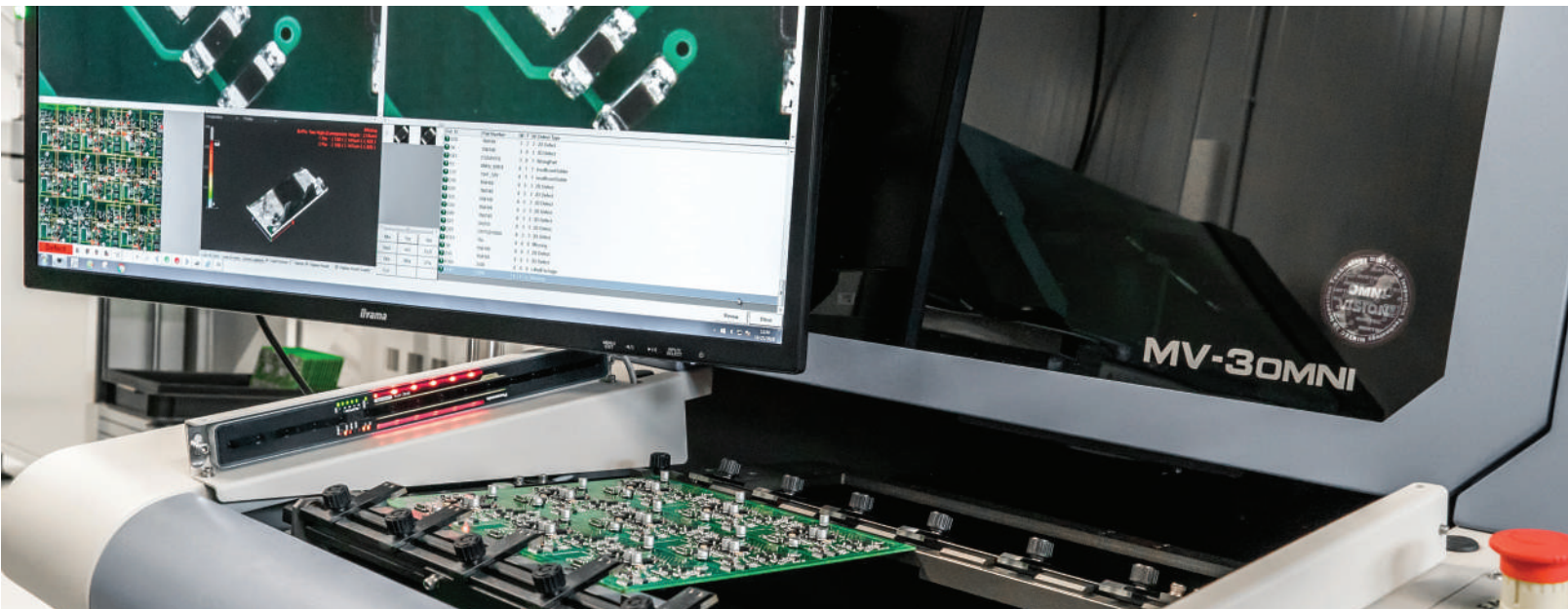


## STABLE INSTALLATION



The BASIC line is a solution for drivers who expect stable operation of the installation while maintaining a favorable price. Ideally suited to cars with engines of a simple and undemanding construction, as well as hybrid cars.

At AG Centrum Research and Development Center, the LIGHT version controller has undergone internal resistance tests: pressure, temperature and electromagnetic compatibility. Then the LIGHT version controller was subjected to the procedure of external tests by research units and obtained homologation. It meets all quality criteria and formal requirements for installation as the main element of the LPG & CNG automotive gas installation.



STABLE  
INSTALLATION

## WHAT DO YOU GAIN BY CHOOSING ZENIT BLUE BOX IN THE LIGHT VERSION?



- gas pressure and temperature sensor (T-MAP) integrated in the flow
- permanent switching of selected cylinders to gasoline
- compensation of the supply voltage
- rpm reading of camshaft sensor
- quick start on gas
- support for full opening of gasoline injectors
- gas mixture adjustment during full opening of the injectors
- smooth additional injections of gasoline while working on gas
- 'Cold VAG' option
- frozen frame
- buzzer test
- "credit" function
- automatic software update
- installation service reminder
- loop support of gasoline injectors



**information about the vehicle and gas installation** – in the configuration window you will find a place to enter the necessary information about the car model, engine capacity, installation components, e.g. nozzles size. When the car is serviced, instead of asking the owner or looking for the car parameters in the vehicle's registration certificate, you have all the necessary data at one click of a button!



**a solution for the needs of hybrid cars** - solenoid valves always open, despite the engine stopping!

# BLUE BOX LIGHT + HYBRID

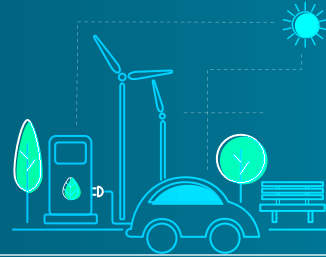


The hybrid car market is growing in strength. Their owners increasingly decide for gas installation. Unlike competing products, Zenit Blue Box LIGHT guarantees a quiet and pleasant ride. This is possible thanks to the dedicated functionality - permanent opening of the solenoid valves. Thanks to it, the characteristic sound of opening and closing the solenoid valves is eliminated when changing the operating mode from an electric engine to a gasoline engine with a gas installation. Travelling with Zenit becomes even more comfortable.

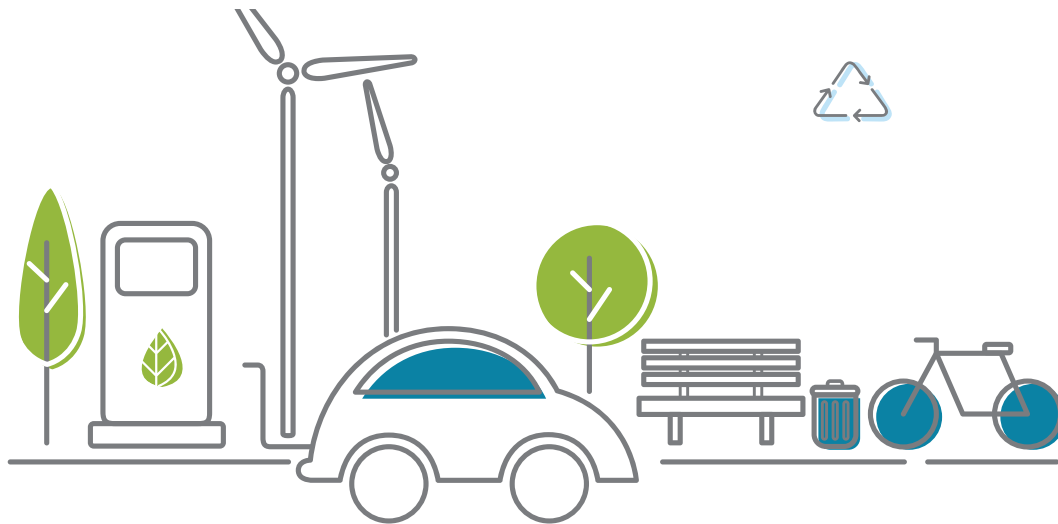
Full functionality described in the Zenit material „Comparison of the controllers” - available at [www.agcentrum.pl](http://www.agcentrum.pl)



## ZENIT BLUE BOX IS ECO!



The use of autogas installations has a positive impact on the environment - it significantly reduces the level of exhaust emissions. One of the global problems in the world is pollution of the environment and smog. We see and feel it on our own skin. To a large extent, pollution comes from the transport sector. An effective way to improve air quality, reduce smog and reduce pollution is to convert your car to LPG. By choosing gas installation, you contribute to the protection of our common good, which is the natural environment and the planet Earth.



ECO FRIENDLY **WITH ZENIT BLUE BOX LIGHT!**



LESS!  
CARBON OXIDE



LESS!  
CARBON DIOXIDE



LESS!  
CARBOHYDRATES  
AND NITROGEN OXIDES

What's more - by choosing specific gas installation - Zenit Black Box - you contribute twice to the protection of the environment. Why? Because the installation is packed into ECO cardboard cartons! Each package is suitable for recycling - due to the use of grey paper and the type of printing.



ZENIT  
BLUE  
BOX  
**IS  
ECO!**



# TIME FOR LIGHT!

Basic line installation - **Zenit Blue Box LIGHT** - was created thanks to the experience and knowledge of the manufacturer of LPG & CNG autogas installations - **AG Centrum**. Every day, in our Research and Development Center, Zenit installations are developed by the team of experienced technicians. As a result, we meet the expectations of the customers from all over the world, and hundreds of thousands of cars in more than 50 countries are equipped with Zenit installations.

 **ZENIT** | BEST PART OF DRIVING  
AUTOGAS SYSTEMS

ZENIT BLUE BOX LIGHT

/ZenitAutogas



| [www.zenitautogas.pl](http://www.zenitautogas.pl) | [www.agcentrum.pl](http://www.agcentrum.pl) |